



MONTHLY MEMBERSHIP PROGRESS REPORT

Results as of: 6/30/2015

Multiple District 26

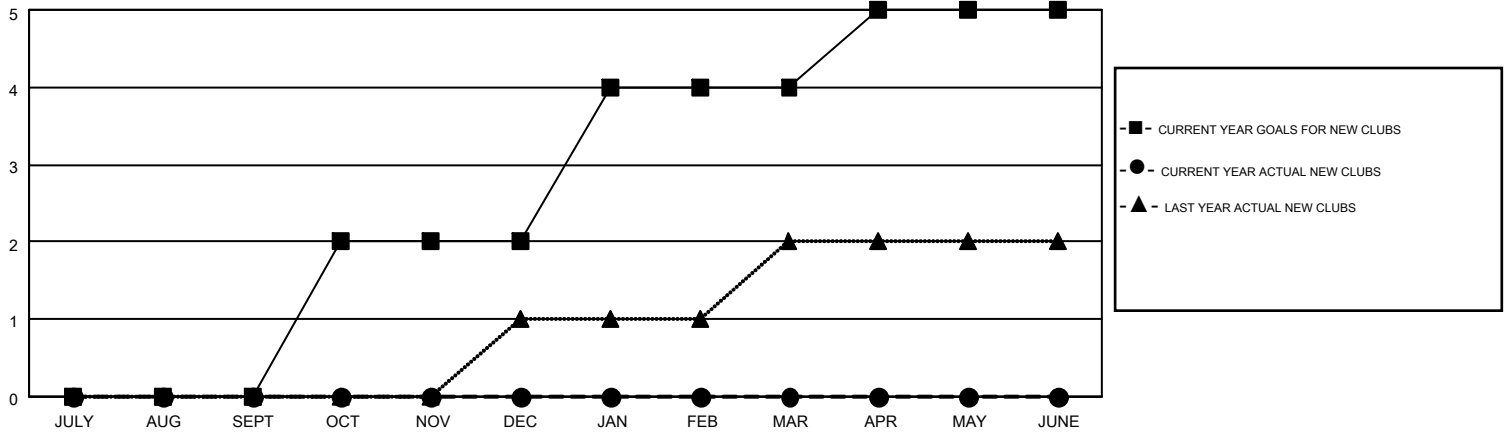
LOCATION: MISSOURI

GMT: HAL GRIFFIN

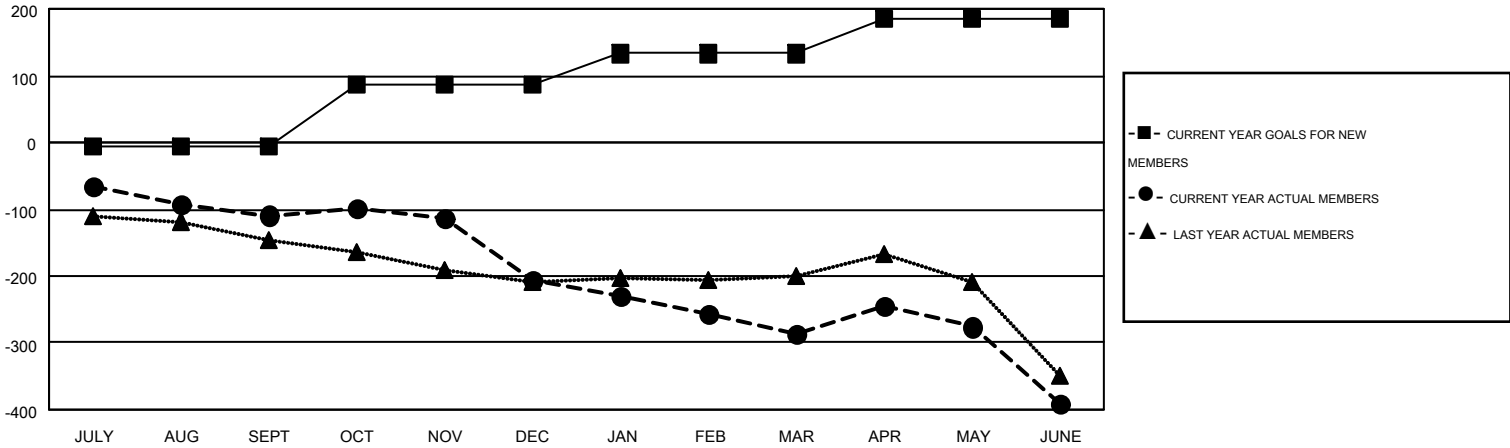
GMT CA 1

Clubs					Members				
RESULTS FOR 2014-2015					RESULTS FOR 2014-2015				
QUARTER	NEW CLUB GOAL	NEW CLUBS	DROPPED CLUBS	NET GAIN/LOSS	QUARTER	NEW MEMBER GOAL	CHARTER AND NEW MEMBERS ADDED	DROPPED MEMBERS	NET GAIN/LOSS
JULY/AUG/SEPT	0	0	2	-2	JULY/AUG/SEPT	-7	219	328	-109
OCT/NOV/DEC	2	0	5	-5	OCT/NOV/DEC	94	183	279	-96
JAN/FEB/MAR	2	0	0	0	JAN/FEB/MAR	46	184	266	-82
APR/MAY/JUNE	1	0	3	-3	APR/MAY/JUNE	53	215	318	-103

GOALS AND ACTUAL NEW CLUBS CUMULATIVE



GOALS AND ACTUAL MEMBERS CUMULATIVE



DROPPED CLUBS: 10	222 CLUBS OF 360 ADDED 1 OR MORE NEW MEMBERS	<u>GENDER DISTRIBUTION</u>	
		MALE	7,029 (75.66%)
		FEMALE	2,261 (24.34%)
<u>DROPPED MEMBERS</u>		<u>FAMILY UNIT MEMBERS</u> 1,552	
DECEASED	152	<u>HEAD OF HOUSEHOLD</u> 759	
CLUB CANCELLED	59	<u>NON-HEAD OF HOUSEHOLD</u> 793	
OTHER	980		
TOTAL	1,191		

[CLICK HERE FOR HEALTH ASSESSMENT DATA](#)